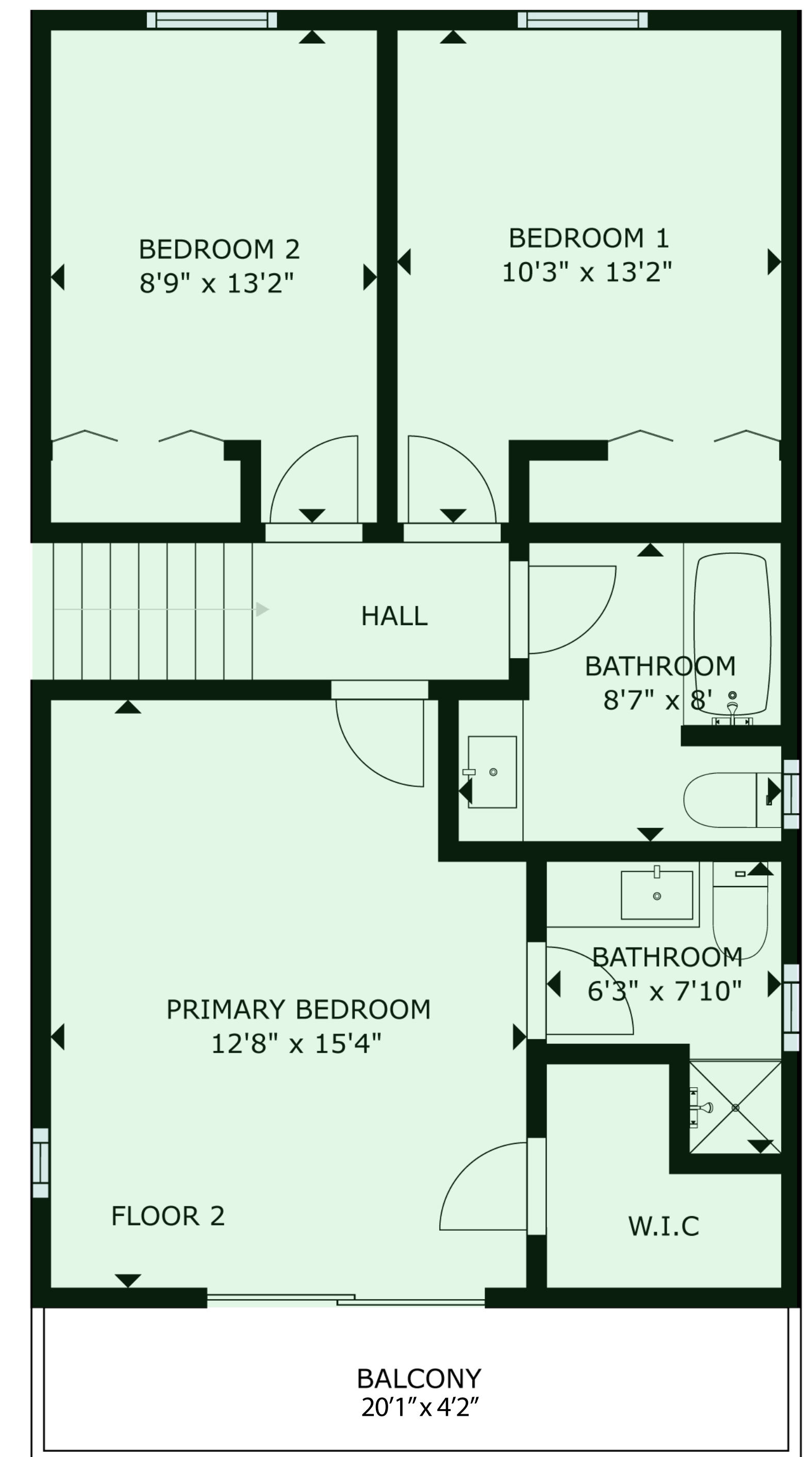
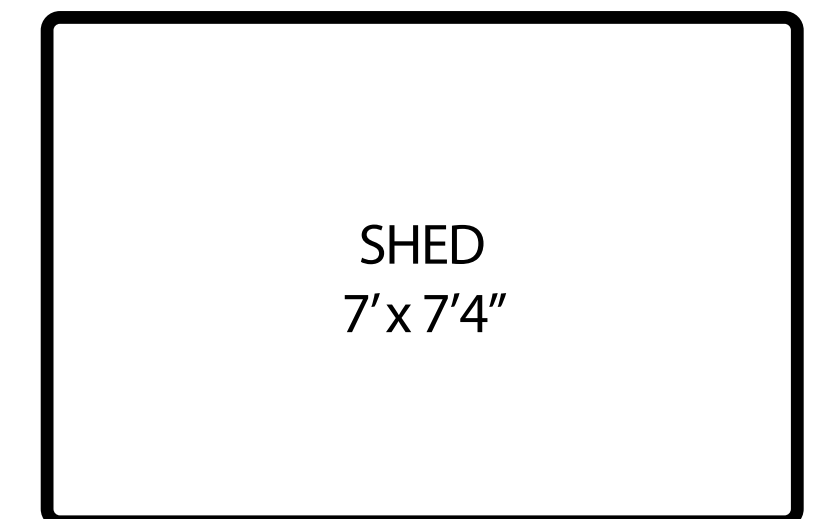
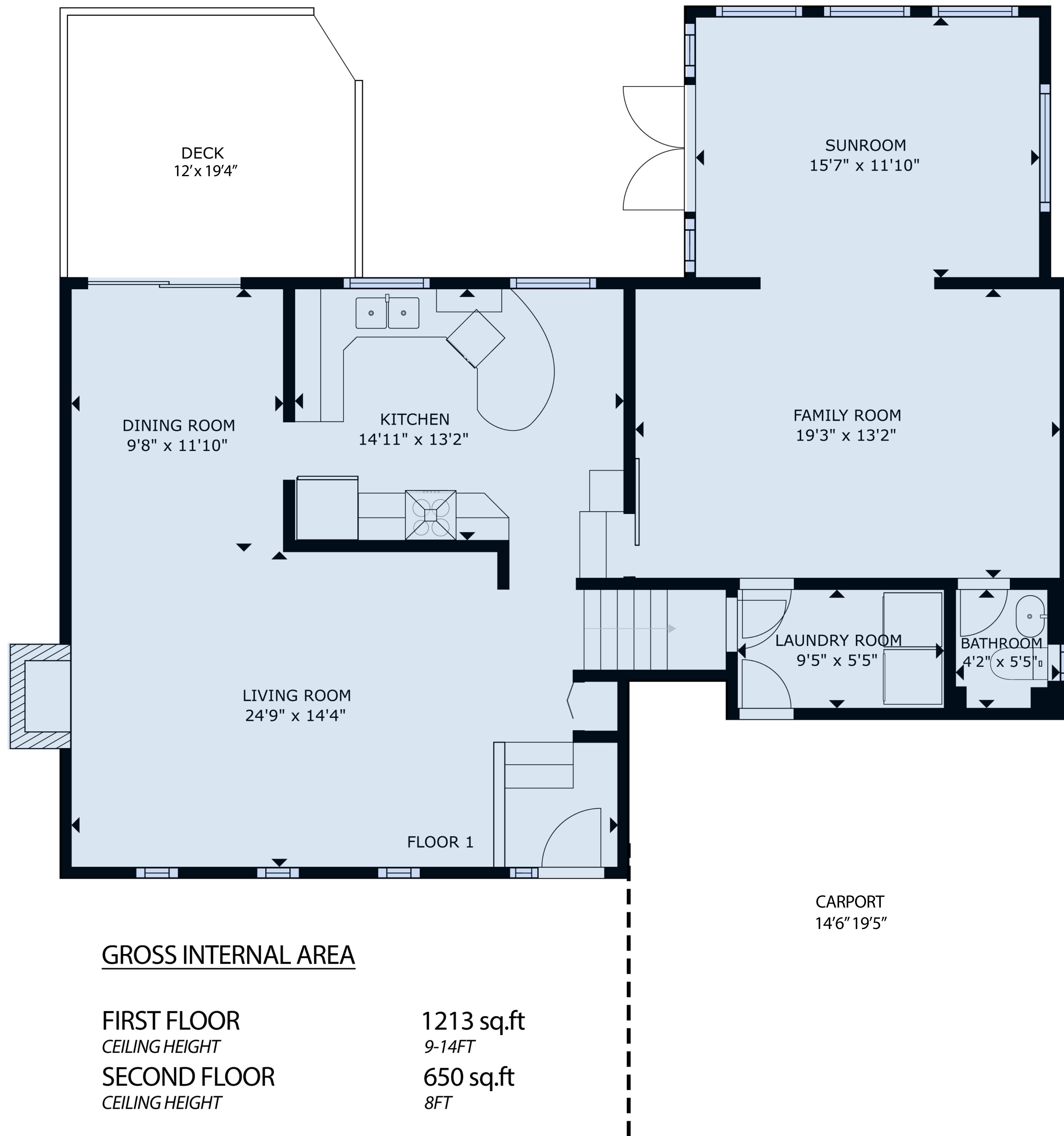


531 LEASIDE PL

VICTORIA, BC

 3 BEDROOMS  3 BATHROOMS  1863 SQ FT



GROSS INTERNAL AREA

FIRST FLOOR 1213 sq.ft
CEILING HEIGHT 9-14FT

SECOND FLOOR 650 sq.ft
CEILING HEIGHT 8FT

TOTAL FINISHED SQFT 1863 sq.ft

EXCLUDED SQFT

BALCONY/DECKS 312 sq.ft

CARPORT 284 sq.ft

SHED 49 sq.ft

SIZES AND DIMENSIONS ARE APPROXIMATE, ACTUAL MAY VARY.

S.


**ALEXANDRA
BAILEY**

REAL ESTATE